



**mavin POWERCUBE™**

CONTAINERISED MODULAR DATACENTRES  
++SPECIAL CONTAINERISED SOLUTIONS

**mavin™**  
desktop to datacentre



## MAVIN CONTAINERISED MODULAR DATACENTRE SOLUTIONS

No nonsense desktop to  
datacentre services

**mavin™**  
desktop to datacentre

For more information  
please contact us today:

**T:** +44 (0) 845 612 1155

**E:** [contact@mavin.global](mailto:contact@mavin.global)

**www.mavin.global**



**mavin POWERCUBE™**

CONTAINERISED MODULAR DATACENTRES  
+ SPECIAL CONTAINERISED SOLUTIONS

## PROPOSITION

Create a key differential for our clients by raising the bar for deliverable IT standards within the business-to-business market place

Mavin Global designs and builds scalable low-> medium -> high power; modular (and moveable) containerised N + 1 (minimum) datacentre solutions.

- BESPOKE
- MODULAR
- SCALABLE
- EFFICIENT
- EFFECTIVE

## Where did it come from and what is it all about?

Launched by Mavin in 2005, the Mavin Containerised Modular Datacentre (CMDC) is an award winning, British designed and built solution, delivering a 100% bespoke, end-to-end solution, including full environmental preparation, power presentation, module fabrication and detailed project management.

Immediately raising interest as a tangible and more flexible alternative to the more traditional datacentre designs of yesteryear, the CMDC delivers an innovative, effective and re-deployable solution to the inherent challenges faced by the businesses of today and tomorrow.



“The decision to implement Mavin's CMDC Solution was driven by the necessity to partner with a datacentre design and build specialist who would work pro-actively through the project's life-cycle, deliver an end-to-end solution and ensure that the operational result met with the business' evolving requirement and expectations.”

**Head of IT, UK NHS**



For more information please contact us today:

**T:** +44 (0) 845 612 1155

**E:** [contact@mavin.global](mailto:contact@mavin.global)

**www.mavin.global**



**mavin POWERCUBE™**  
CONTAINERISED MODULAR DATACENTRES  
+ SPECIAL CONTAINERISED SOLUTIONS

## INNOVATION

What you see is what you get with Mavin Powercube

Innovation is delivered not only through the physical bespoke and scalable nature of the CMDC but also via its ability to provide client organisations with the ability to manage their capital expenditure more effectively and efficiently.

This is achieved by providing a 'plug & play' / 'pay-as-you-go' architecture that enables tangible, real time, capacity planning.



### **Definition of a Containerised Modular Datacentre:**

Employing or involving a module or modules as the basis of design or construction.



For more information  
please contact us today:

**T:** +44 (0) 845 612 1155

**E:** [contact@mavin.global](mailto:contact@mavin.global)

**www.mavin.global**



**mavin POWERCUBE™**  
CONTAINERISED MODULAR DATACENTRES  
+ SPECIAL CONTAINERISED SOLUTIONS



## DESIGN AND CONCEPT

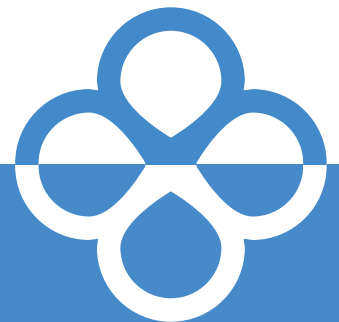
Creating a balance between traditional, current and next generation

Mavin Powercube has various design concepts incorporating a calculated balance between traditional, current and next generation ideologies.

All concepts are designed to maximise efficiency, space requirement and provide scalable, fit-for-purpose environments for individual user requirements.

The CMDCs can be used as primary critical datacentres, secondary DR facilities or scalable and secure hubs for wider and remote datacentres.

They are available in single or multiple formats, **the options are almost limitless.**



Mavin's commitment to innovation has been recognised at the Datacentre Awards for Datacentre Dynamics and ICT Excellence Award for best value added service in 2009.



For more information please contact us today:

**T:** +44 (0) 845 612 1155

**E:** [contact@mavin.global](mailto:contact@mavin.global)

**www.mavin.global**



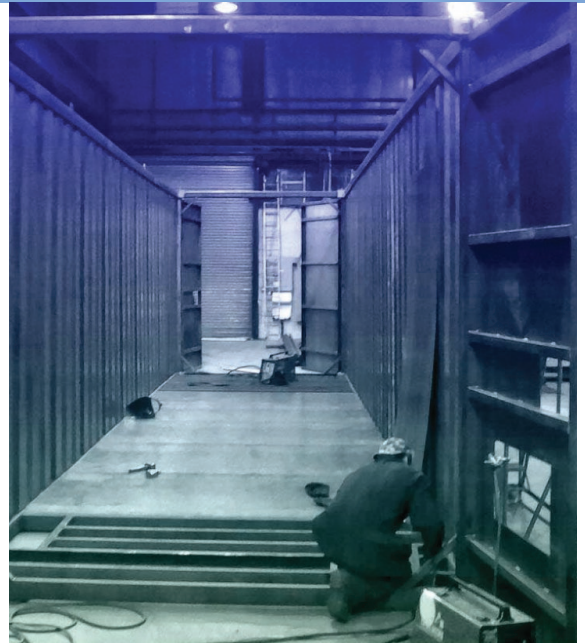
**mavin POWERCUBE™**  
CONTAINERISED MODULAR DATACENTRES  
+ SPECIAL CONTAINERISED SOLUTIONS

## BUILD

Mavin creates individually designed modular solutions with state-of-the-art precision

We build each client's containerised modular solution from scratch combining the latest energy efficient composites with specific design requirements, supporting deployment agility, future scalability and fit-for-purpose operation.

Our new UK build facility is complimented with state-of-the-art precision, laser cutters, enabling multiple projects to be managed within short timescales.



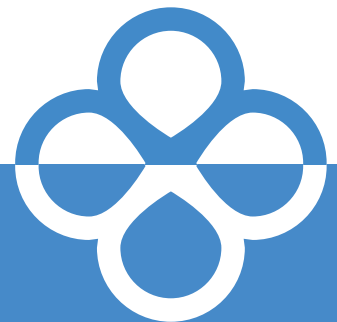
## Neutral

From a vendor platform perspective the CMDC remains 100% neutral. We do not dictate to the client organisation what make or model of IT Server or storage device to employ, therefore making our CMDC solution ideal for supporting heterogeneous environments.

- SUN MICROSYSTEMS
- HP
- IBM
- HITACHI DATA SYSTEMS
- NETAPP
- EMC<sup>2</sup>

## 100% neutral datacentre:

Mavin containerised modular solution build.



For more information please contact us today:

**T:** +44 (0) 845 612 1155

**E:** [contact@mavin.global](mailto:contact@mavin.global)

**www.mavin.global**

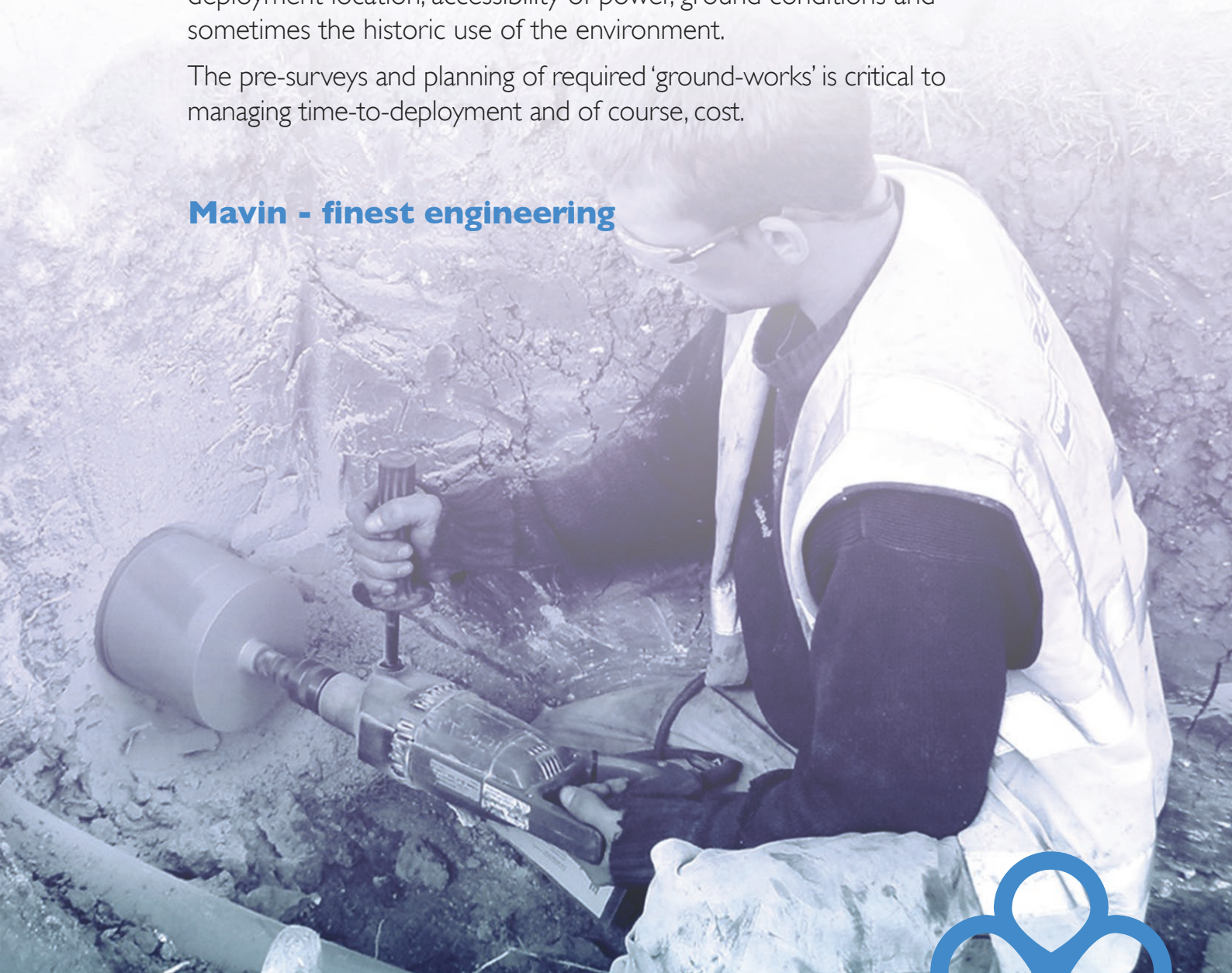
**mavin POWERCUBE™**CONTAINERISED MODULAR DATACENTRES  
+ SPECIAL CONTAINERISED SOLUTIONS

## PREPARATION

The level of physical site preparation varies depending upon the deployment location, accessibility of power, ground conditions and sometimes the historic use of the environment.

The pre-surveys and planning of required 'ground-works' is critical to managing time-to-deployment and of course, cost.

### Mavin - finest engineering



## Mavin site build preparation:

Preparing the site for your build



For more information  
please contact us today:

**T:** +44 (0) 845 612 1155

**E:** [contact@mavin.global](mailto:contact@mavin.global)

**www.mavin.global**



**mavin POWERCUBE™**  
CONTAINERISED MODULAR DATACENTRES  
+ SPECIAL CONTAINERISED SOLUTIONS

## DEPLOYMENT

The CMDC may be deployed as a standalone structure or internally within a host building

The cost for a CMDC is economical compared to a traditional design and build.

Being modular and therefore moveable, should an organisation wish to relocate they have the capability to migrate their entire datacentre set-up relatively quickly and economically cost wise.

## Flexible deployment options within Mavin



“The Team at Mavin have been with us every step of the way from conceptual design right through procurement, installation, configuration and into production. Additionally, they have supported our full Business Continuity setup, testing and validation process required to support a full ERP implementation.”

**Head of Datacentres, MoD**



For more information  
please contact us today:

**T:** +44 (0) 845 612 1155

**E:** [contact@mavin.global](mailto:contact@mavin.global)

**www.mavin.global**

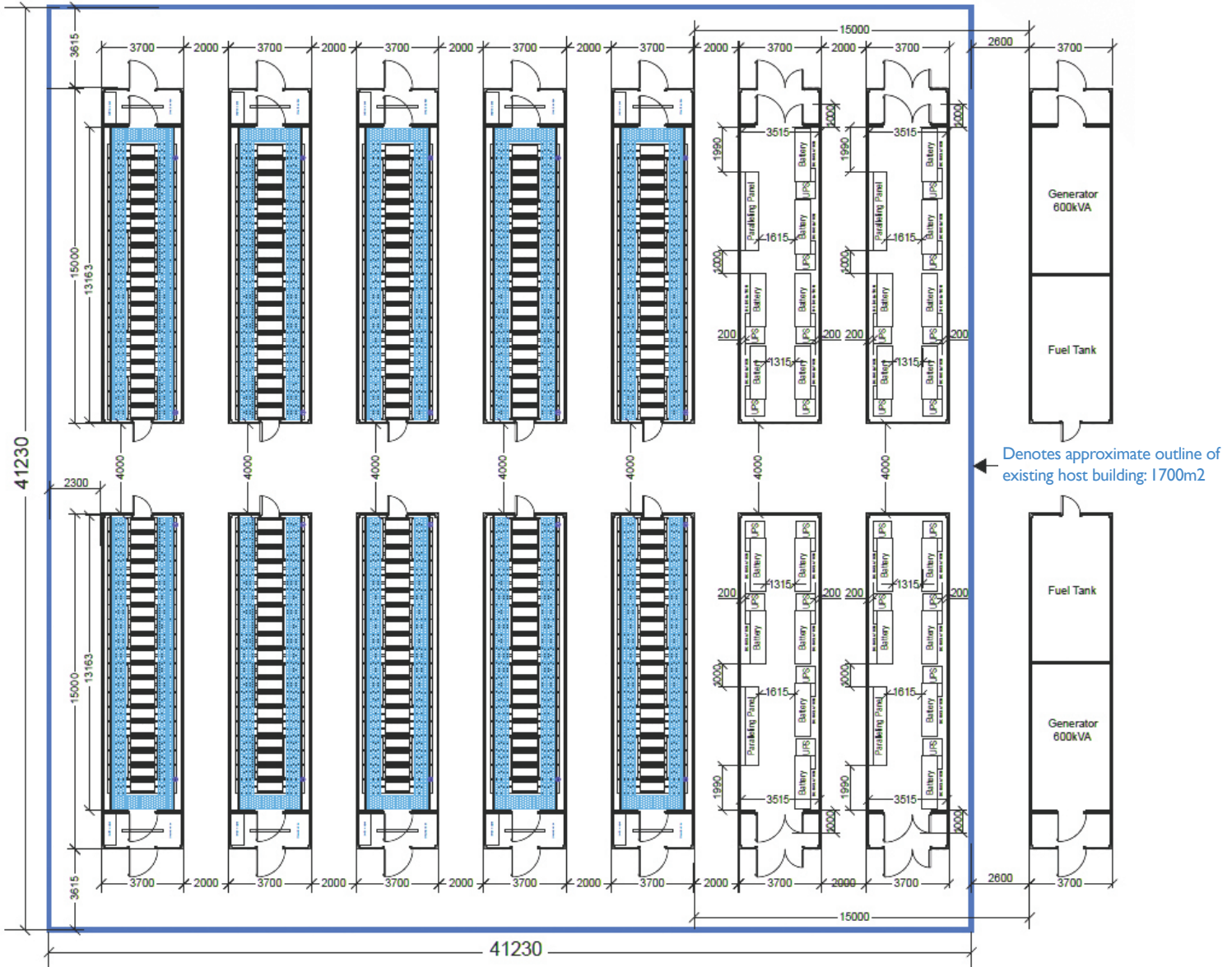




## PHASE 2

Project MG001846 - Germany 2012/13

CMDC internal deployment within host building



- 10 x HIGH DENSITY CMDC'S
- 375 X RACKS @ 5.5KW
- N+1 COOLING WITH FREE COOLING
- N+1 UPS / N GENERATOR



For more information  
please contact us today:

**T:** +44 (0) 845 612 1155  
**E:** [contact@mavin.global](mailto:contact@mavin.global)  
**www.mavin.global**


**mavin POWERCUBE™**

 CONTAINERISED MODULAR DATACENTRES  
 + SPECIAL CONTAINERISED SOLUTIONS

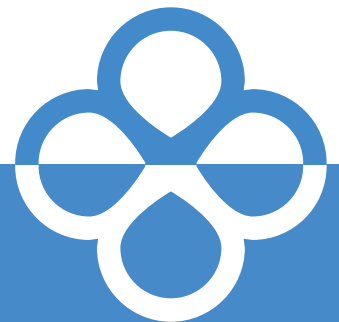

## GLOBAL REACH

Our solutions are designed to be deployable almost anywhere worldwide

### The Mavin Advantage - Universal Adaptability

We can design in specific features to manage operations in all kinds of natural and man-made environments. Our solutions may be shipped via the majority of conventional methods or designed for transportation by non-conventional means.

Mavin can assist with route planning, transportation deployment and on-site installation upon arrival. We are happy to discuss all project requisites with you as required.



“Through their ongoing portfolio growth of services, solutions and hardware supply, Mavin have positioned themselves as a strong reputable partner that Weetabix can rely upon to deliver across a breadth of the Information Technology spectrum.”

For more information  
please contact us today:

**T:** +44 (0) 845 612 1155

**E:** [contact@mavin.global](mailto:contact@mavin.global)

**www.mavin.global**



**mavin POWERCUBE™**  
CONTAINERISED MODULAR DATACENTRES  
+ SPECIAL CONTAINERISED SOLUTIONS

## COMMISSIONING

Ensuring your CMDC solution is 100% ready for deployment and securely hosting your critical IT environment is all part of the service

Dedicated to your project, the Mavin team will work efficiently and effectively with your project team to rigorously check, test and double-check that all individual components function according to design and that the overall solution is operating correctly and in line with the project designated industry standards.



Achieving an industry recognised 'Green Efficiency' status is high on the list of operational design requirements for the majority of our clients. Mavin's Containerised Datacentre solutions provide the platform for achieving this.



"The team at Mavin don't just make you think you are important to them as a customer, they ensure this really is the case and prove it, time after time."

For more information  
please contact us today:

**T:** +44 (0) 845 612 1155

**E:** [contact@mavin.global](mailto:contact@mavin.global)

**www.mavin.global**



**mavin POWERCUBE™**

CONTAINERISED MODULAR DATACENTRES  
+ SPECIAL CONTAINERISED SOLUTIONS

## THE BOTTOM LINE

Got all the best equipment but wondering how to use it to get the best results and improve your bottom line?

*Lower than a traditional DC build  
- 10-30% less per square ft*

*Our bespoke Modules with  
N+1 cooling start from £45K*

*Significantly reduce CD set-up  
cost element of any company  
relocation*

**Lower Costs**  
**Faster Time-To-Market**  
**Pay-As-You-Grow**  
**Free Cooling System**  
**Redeployable**  
**Tangible Asset**

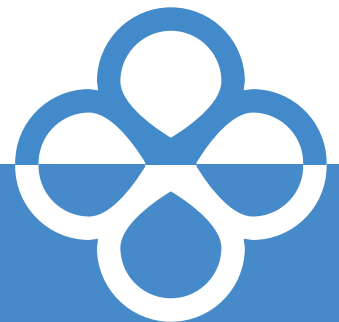
*Typically 8 weeks rather  
than 18+ months*

*Efficient FREE Cooling  
Systems, increasing  
operational efficiency,  
decreasing costs and  
assisting GREEN goals*

*Potential for resale and  
Capex recoup*

Get the best results  
with Mavin

- FASTER DEPLOYMENT
- LOWER COSTS
- BESPOKE
- PAY-AS-YOU-GROW
- RE-DEPLOYABLE
- TANGIBLE ASSET
- EFFICIENT
- FREE COOLING
- DECREASE COSTS



For more information  
please contact us today:

**T:** +44 (0) 845 612 1155

**E:** [contact@mavin.global](mailto:contact@mavin.global)

**www.mavin.global**



**mavin POWERCUBE™**  
CONTAINERISED MODULAR DATACENTRES  
+ SPECIAL CONTAINERISED SOLUTIONS

## INDUSTRY STATISTICS

Go modular with a Mavin Containerised Datacentre and reap the benefits for your business

### Mavin CMDC Features

- BESPOKE DESIGN AND BUILD
- ALL CRITICAL INFRASTRUCTURE
- ENERGY EFFICIENT TECHNOLOGY
- ACCOMMODATES ANY IT HARDWARE
- MULTIPLE SUPPORT OPTIONS AVAILABLE

### Mavin CMDC Benefits

- FASTER TIME-TO-MARKET
- LOWER COSTS
- PAY-AS-YOU-GROW
- HIGH AVAILABILITY
- GOES ANYWHERE (ALMOST)
- CAN UTILISE EXISTING ON-SITE COOLING, UPS AND GENERATOR PLANT

### The CMDC advantage

About 5-10% of the cost of a Datacentre is taken up building the 'bricks and mortar' with another 70-80% going on the electrical and cooling systems.

If you go modular with our Mavin CMDC Datacentre, you can plan for a day when you will need to be able to draw 20kw per rack but only power and cool it for the 6kw per rack you need today.

Without Mavin CMDC you can defer 40-50% of the upfront capital costs and also about half of the electricity and operational costs.

These numbers add up fast, citing the rule of thumb that over a 20 year lifespan the cost of running a Datacentre is three to five times the cost of designing and building it.



**Modular Design:**  
For efficient deployment.

For more information  
please contact us today:

**T:** +44 (0) 845 612 1155

**E:** [contact@mavin.global](mailto:contact@mavin.global)

**www.mavin.global**

**mavin POWERCUBE™**CONTAINERISED MODULAR DATACENTRES  
+ SPECIAL CONTAINERISED SOLUTIONS

## DESIGN AND QUOTE

To request a budgetary design and quote simply answer the following 7 questions:

### Email [contact@mavin.global](mailto:contact@mavin.global)

- PHYSICAL SPACE AVAILABLE - (INTERNAL OR EXTERNAL)?
- MAX POWER AVAILABLE TO SITE
- RACK QUANTITY?
- CURRENT IT LOADING (KW) - PROJECTED FUTURE IT LOADING (KW)?
- COOLING RESILIENCE REQUIRED?
- UPS REQUIREMENT INCLUDING AUTONOMY?
- GENERATOR REQUIREMENT?



“As a Team, the guys at Mavin have a great can-do approach that makes them easy to do business with.”

For more information  
please contact us today:

**T:** +44 (0) 845 612 1155

**E:** [contact@mavin.global](mailto:contact@mavin.global)

**www.mavin.global**



## YOUR QUESTIONS

Request more information. Mavin Global welcomes your questions.

INFRASTRUCTURE SUPPORT

Full infrastructure support whatever the size of your business

DATACENTRE SERVICES

Ask about our Core Solutions

DATACENTRE RELOCATION

Ask about our Economical Datacentre Migration Capabilities

COOPERATIVE SERVICES

We will work proactively with you

CONTAINERISED MODULAR DATACENTRES

A more flexible alternative to traditional datacentre designs

DISASTER RECOVERY

PROJECT MANAGEMENT

We are here for you in a crisis  
Detailed Project Management Environment  
Preparation & Module Fabrication

**Innovative and effective:**

Mavin modular.



For more information please contact us today:

**T:** +44 (0) 845 612 1155

**E:** [contact@mavin.global](mailto:contact@mavin.global)

**www.mavin.global**